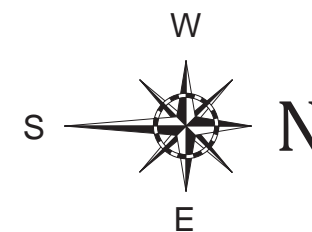
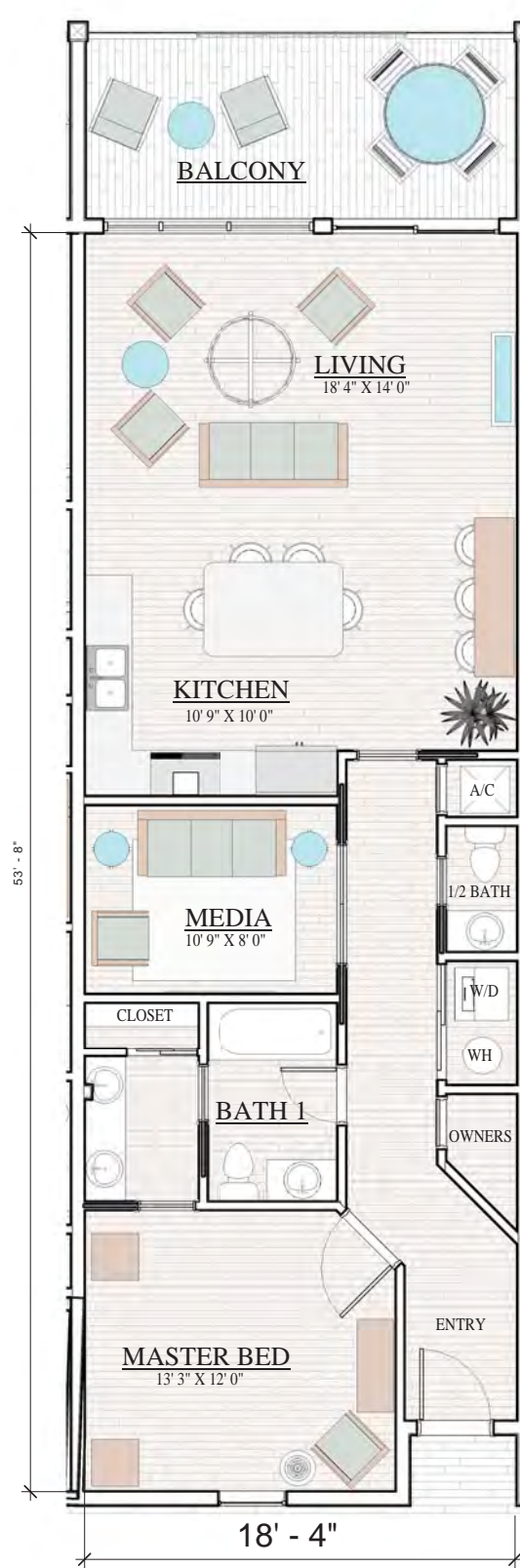
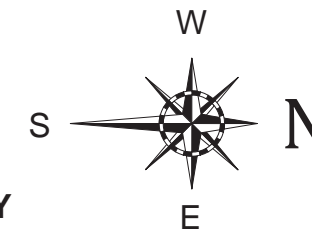


SEA GLASS



RE/MAX Paradise
Bob Shallow 251-948-8888



"NEED NOT BE BUILT"



HENRY NORRIS & ASSOCIATES

ARCHITECTURE & ENVIRONMENTAL DESIGN

30 N. PALAFOX
PENSACOLA, FL 32502
(850)432-6011
FAX 435-9001

Sea Glass Condominium
West Beach Blvd., Gulf Shores

JOB #: 0201811
CAD: BK
CHECKED: HN
DATE: 1-30-2019

REVISIONS:

SEAL:

SHEET TITLE:
UNITS D, E, F

A102